

Features:

- 150 mW (50/125 μm step index MM fiber)

Applications:

- fiberoptic sensors
- optical measurements
- low speckle illumination

Packages:

- *fiber coupled* – Butterfly

Additional & customized:

- free-space version available upon request

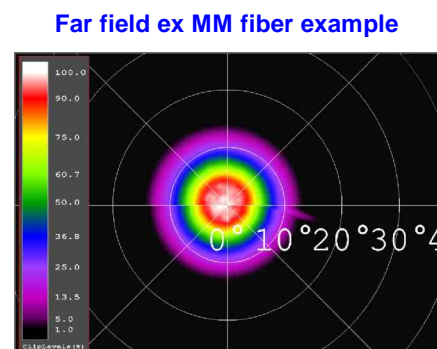
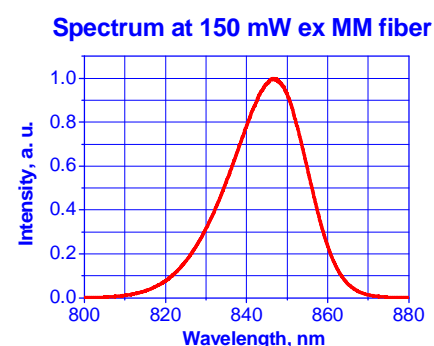
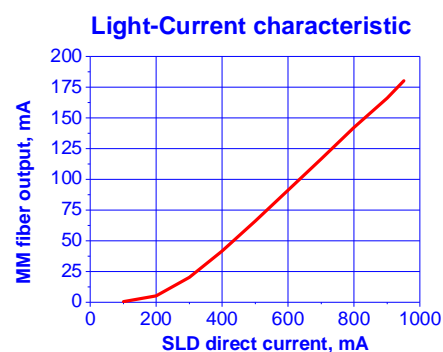
Specifications**(nominal emitter stabilization temperature is +25 °C)**

Parameter	Min.	Typ.	Max.
Output power ex 55/125 MMF, mW		150	
Forward current, mA		900	
Forward voltage, V			2.8
Peak wavelength, nm		840	
Spectrum width, nm	15	20	
Residual spectral modulation depth, %		2.0	5.0
Operating temperature range, °C	-55		+60
Storage temperature range, °C	-55		+85
Cooler current, A			2.5
Cooler voltage, V			3.8

The following part numbers should be used for **ordering**:

SLD-M381-HP-DBUT-MM-PD-FC/APC

All specifications are subject to change without notice.

PERFORMANCE EXAMPLES

A lot of customized solutions are available—contact us with your detailed requirements!